



Eastern Avenue, Ilford, IG2 7RY

£2,900 Per Calendar Month





Eastern Avenue

Ilford, IG2 7RY

- Four Bedroom
- Private Driveway
- Within Close Proximity To Newbury Park Tube Station
- Two Bathrooms and Separate WC
- Private Garden

A four bedroom house in Newbury Park within close proximity to the station and easy access to the A12 into London and out into Essex.

On the ground floor there is a double bedroom, separate WC and a large open plan kitchen/reception that leads out onto a private garden. The private garden further benefits from a BBQ area.

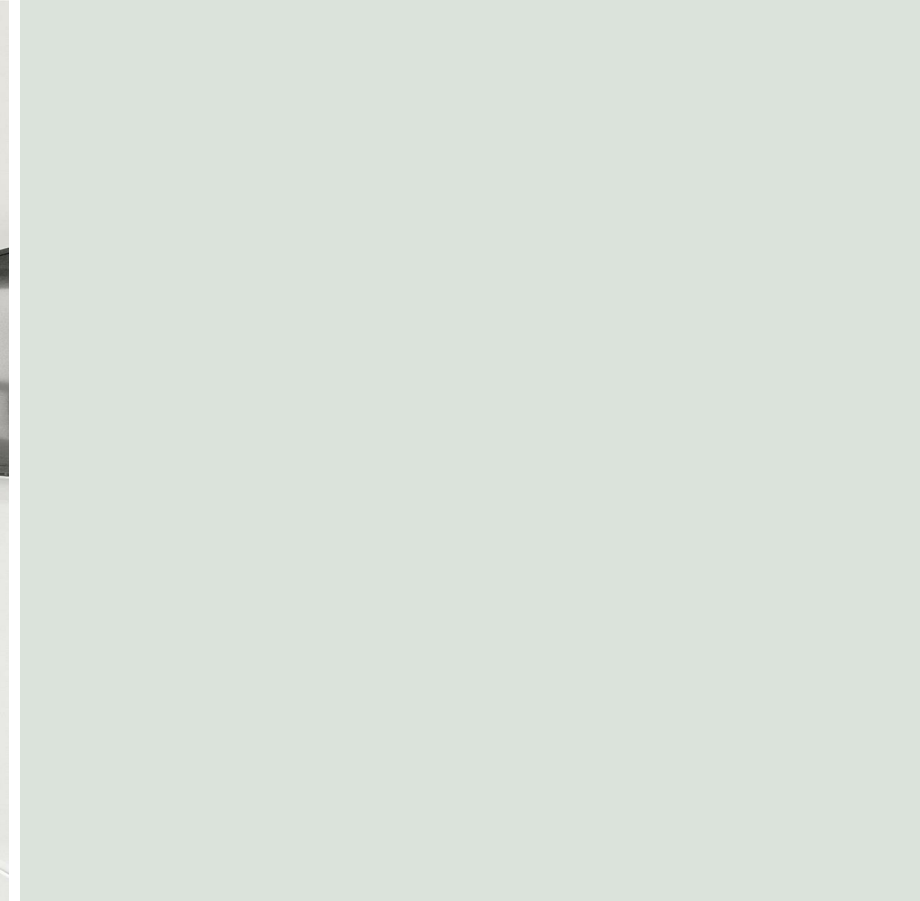
The first floor comprises of two double bedrooms and a family bathroom, whilst the second floor consisting of a large double bedroom and en-suite.

The property has a private drive allowing off street parking.

The property is located within walking distance of Newbury Park station. There is a bus stop close to the property and the A12 provides easy access into London and out into Essex.

£2,900 Per Calendar Month



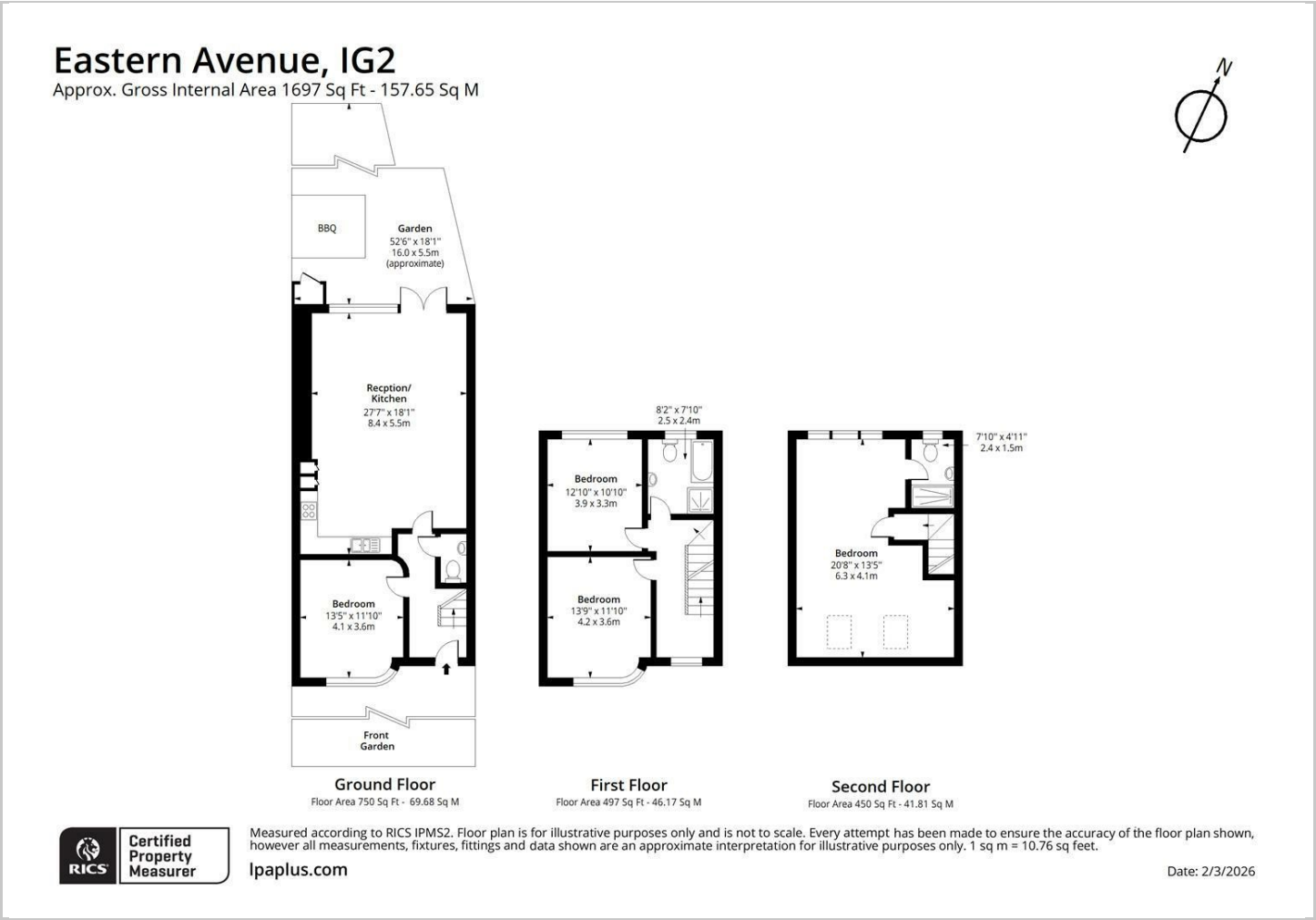


Directions





Floor Plans



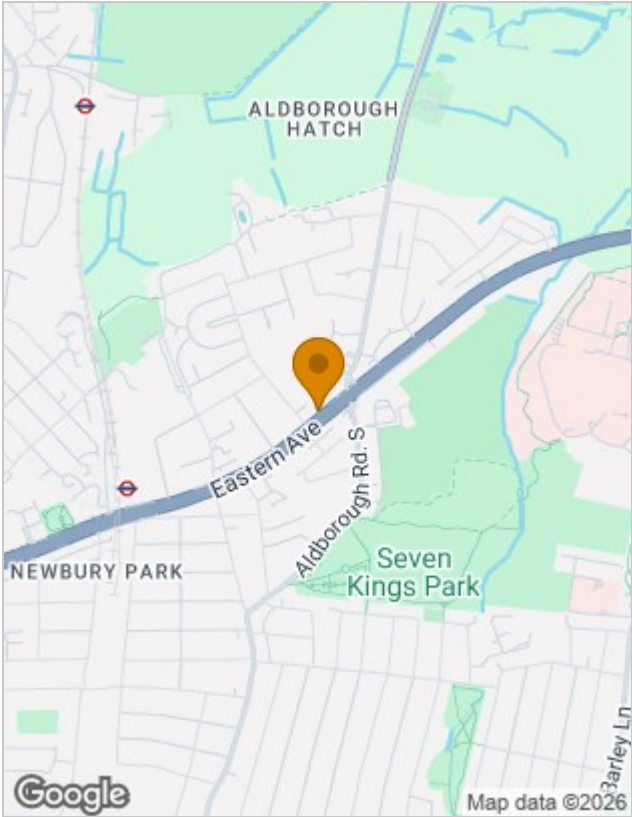
Viewing

Please contact our Redbridge Lettings Office on 020 8551 0211 if you wish to arrange a viewing appointment for this property or require further information.

The particulars are set out as a general outline only for the guidance of intended purchasers or lessees, and do not constitute, any part of a contract. Nothing in these particulars shall be deemed to be a statement that the property is in good structural condition or otherwise nor that any of the services, appliances, equipment or facilities are in good working order. Purchasers should satisfy themselves of this prior to purchasing.

10 Roding Lane South, Essex, IG4 5NX
Tel: 020 8551 0211 Email: redbridge@sandradavidson.com <https://www.sandradavidson.com>

Location Map



Energy Performance Graph

